

# checkSTRESS™

(for AutoPlant / CATIA / SmartPlant 3D / AutoCAD Plant 3D / PCF)

## Introduction

Under the “checkSTRESS” brand name, three products are available namely checkSTRESS (which generates only CAEPIPE input file), checkSTRESS II (which generates input files for both CAEPIPE and CAESAR II) and checkSTRESS Nuke (which generates input files for both CAEPIPE and PIPESTRESS).

The following table lists the checkSTRESS products currently available for different 3D Plant Design systems.

SI. No.	3D Plant Design System	Product Name	Status
1	PDMS	checkSTRESS	Available
2	PDMS	checkSTRESS II	Available
3	PDMS	checkSTRESS Nuke	Available
4	CADMATIC	checkSTRESS	Available
5	CADMATIC	checkSTRESS II	Available
6	CADMATIC	checkSTRESS Nuke	Available
7	PDS	checkSTRESS	Available
8	PDS	checkSTRESS II	Available
9	PDS	checkSTRESS Nuke	Available
10	PCF	checkSTRESS	Available
11	PCF	checkSTRESS II	Available
12	PCF	checkSTRESS Nuke	Available

This document describes the common features of checkSTRESS products currently available for those 3D Plant Design systems (such as AutoPLANT, CATIA, SmartPlant 3D, SolidEdge, etc.) that generate .pcf files from their respective database.

Details related to the generation of CAESAR II input files by checkSTRESS II and PIPESTRESS input files by checkSTRESS Nuke are covered in a separate document titled “CIIModel.pdf” and “PSModel.pdf” respectively.

## Installing Program

To install checkSTRESS on Windows OS, load the product CD supplied and execute the followings steps:

- 1 Browse the CD, and run the program "Setup.exe" and follow the instructions as they appear on the screen.

- 2 Define an environmental variable with name "checkSTRESS\_PCF" and the value as checkSTRESS Installation path.

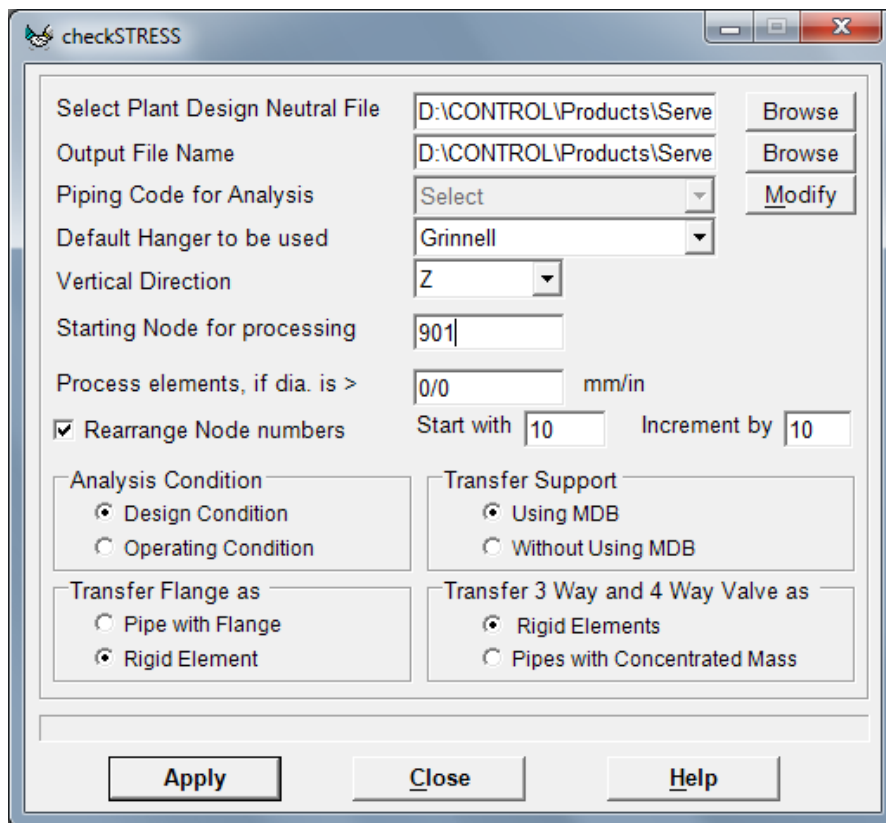
For example, set the value as "C:\Progra~1\checkSTRESSNukePCF (assuming checkSTRESS is installed in the directory "C:\Program Files\checkSTRESSNukePCF).

**Note:**

Use only short names while defining the Environmental variable and do not use 'space' or 'special characters' while defining the absolute path.

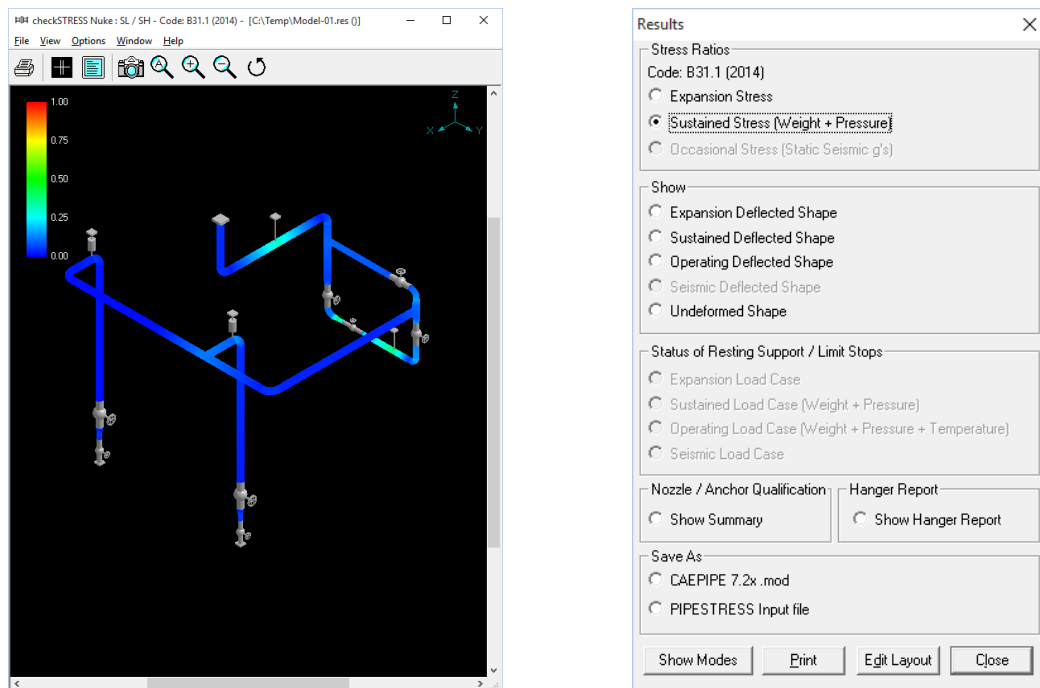
## How to use checkSTRESS?

- 1 Select the PCF file(s). Use "shift" key for selecting multiple PCF files. checkSTRESS combines the PCF files in to one stress analysis model, when multiple files are selected.
- 2 Specify the name of the output file.



- 3 Select the piping code to be used for the analysis from the list box.
- 4 Enter the Starting Node number and Node increment value in the appropriate field by selecting the option "Rearrange Node Numbers". By default, the Starting Node number and Node increment are set to 10 and 10 respectively.
- 5 Enter the Specific Gravity of fluid with respect to water. By default the specific gravity is set to 1.0.

- 6 Select Default Hanger to be used in checkSTRESS. This selected Hanger type will be used in checkSTRESS, only when the hanger type in checkSTRESS corresponding to Plant Design hanger is not specified /available in the Mapping DB. For details on transferring support from Plant Design to checkSTRESS, refer **Appendix D** of checkSTRESS User's manual (checkSTRESS.pdf).
- 7 Specify the Starting Node number for processing network. This is set to 10 by default. If the user is not sure about the node number, then this can be left as 10 or enter as 0.
- 8 If the user wishes to eliminate those elements whose Nominal size (NS) is less than 50mm / 2in, then they can specify the value as "50/2" in the field "Process elements, if dia >". In other words, the program will process only those elements whose nominal size is greater than the value specified in the field above.
- 9 Specify how the Flange to be transferred to checkSTRESS.
- 10 Specify how the 3 Way and 4 Way Valves are to be transferred to checkSTRESS.
- 11 Choose the Global Vertical Axis for checkSTRESS from the Vertical Direction option. By default, "Z Axis" shall be taken as Global Vertical Axis.
- 12 Press the button "Apply" to perform the Stress Check.



- 13 Figure above shows the stress contour plot for the Sustained case. Expansion Stress plot can be seen by selecting the option "Expansion Stress" as shown in the figure right above.
- 14 Designers can also plot and view the deflected shapes of the piping system under different loading conditions using the options available in the heading titled "Deflected Shape" as shown in the figure on the right above.
- 15 Designers can review the Nozzle / Anchor Qualification using the Option "Show Summary".

- 16 Hanger selected by checkSTRESS for “to be designed” hangers can be viewed by selecting the option “Show Hanger Report”.
- 17 Designers can generate the CAEPIPE mod file using the option “CAEPIPE 7.2x mod” for the Stress Department to carry out the detailed analysis including stress report preparation.
- 18 Similarly, in order for the Stress Department to carry out the detailed analysis including stress report preparation, designers can generate CAESAR II input files in checkSTRESS II product and PIPESTRESS input files in checkSTRESS Nuke product respectively, by selecting the appropriate option from the dialog box as shown above.
- 19 Using the option “Print”, designers can print the model data, code compliance for ten (10) high stress nodes, Nozzle / Anchor Qualification and Status of Resting Support / Limit Stops.
- 20 Mode shapes reports using the option “Show Modes” are available only for checkSTRESS Nuke product.

## Limitations

The following are not transferred to checkSTRESS from Plant Design database at this time. However user can add these in checkSTRESS through Edit Layout->Misc->Section

- 1 Insulation density and Insulation thickness.
- 2 Corrosion allowance and Mill tolerance.
- 3 Lining Density and Lining Thickness.

## Reference

### Units

Piping system from PCF will be transferred to checkSTRESS in **SI** units when the attribute “UNITS-CO-ORDS” is defined as “MM” in PCF. Otherwise, the piping system will be transferred to checkSTRESS in **ENGLISH** units.

### Loads

Temperature for the piping system is read from “PIPELINE-TEMP” attribute of Pipeline Header information (PIPELINE-REFERENCE attribute) in PCF and will be transferred to checkSTRESS, if available. If not available in PCF, then the Temperature for the piping system will be transferred as 21 deg C / 70 deg F for **SI / English** units.

Pressure for the piping system is not available in PCF and hence the same will be transferred as 0 to checkSTRESS.

User can add / modify the Temperature and Pressure for the Piping System through Edit Layout->Misc->Loads

**Note: Program will assume that the value of the attribute “PIPELINE-TEMP” available in PCF as deg.F, if the “UNITS-CO-ORDS” attribute is defined as “ENGLISH” in PCF. On the other hand, the program will assume that the value of the attribute “PIPELINE-TEMP” available in PCF as deg.C, if the “UNITS-CO-ORDS” attribute is defined as “MM” or “MM-HUNDREDTH” in PCF.**

## Fluid Density

Specific Gravity of the fluid (with respect to water) entered in the form as shown above will be used by checkSTRESS for calculating the fluid weight in the piping system.

## Weight

The weights of Valves, Instruments, Flanges, etc. are read from “WEIGHT” attribute of component data from PCF and will be transferred to checkSTRESS, if available. If not available, then the weight will be transferred as 0.0 to checkSTRESS.

User can add / modify the weight of components through Edit Layout->Window->List.

## Wall Thickness

Wall thicknesses of the Piping components are not available in PCF for different components. Hence, a Mapping DB is configured outside PCF to transfer the Wall Thickness information to checkSTRESS properly. Refer **Appendix C** of checkSTRESS User’s Manual (checkstress.pdf) for details.

User can modify the Wall thickness of the piping components through Edit Layout->Misc->Section.

## OD and Nominal Size

Nominal size of a component is read from END\_POINT attribute of PCF. OD of the piping component is not available in PCF. Hence, OD corresponding to component Nominal size is extracted from the Mapping DB configured outside PCF to transfer the same to checkSTRESS. Refer Appendix C of checkSTRESS User’s Manual (checkstress.pdf) for details.

User can modify the OD and Nominal size of the piping components through Edit Layout->Misc->Section.

## Boundary Conditions

The present version of the checkSTRESS (for PCF) will “Anchor” all the free ends irrespective of whether they are connected to Equipment Nozzle or other Pipelines as the details of pipeline connections are not available in PCF file at this time.

User can add / modify supports in piping system through Edit Layout->Misc->Data Types

## Supports

Support details including their locations will be transferred to checkSTRESS as follows.

- Checks for attribute “SUPPORT” in PCF.
- If the attribute “SUPPORT” is defined in PCF, then reads the attribute “CO-ORDS” to locate the support in the specified coordinate.
- Reads the support type information from the attribute “SKEY” (if available) and generates the equivalent support type in checkSTRESS by reading the Mapping DB (SupportType.mdb available with the product) when the option “Transfer Support using MDB” is selected from the dialog shown above. User can also customize and transfer support information along with stiffnesses, gap and friction by selecting

the option “Transfer Support without using MDB”. Refer **Appendix D** and **Appendix E** of checkSTRESS User’s Manual for details.

- If the attribute “SKEY” is not defined / available, then the support type will be transferred as “Hanger” with Hanger Type as specified in “Default Hanger to be used” option.

User can add / modify supports in piping system through Edit Layout->Misc->Data Types

## **Material**

Material description entered at attribute “ITEM-CODE” will be read and the material property is then obtained from the intermediate mapping db. The material property thus obtained will be transferred to checkSTRESS. Refer Appendix B of checkSTRESS User’s Manual for details.

User can add / modify the Material properties in checkSTRESS through Edit Layout->Misc->Materials.

## **Thermal Anchor Movement (TAM)**

Thermal Anchor Movement (TAM) values entered at attribute “ATTRIBUTE1” under “END-CONNECTION-EQUIPMENT” of PCF file in the format “X Y Z” in global X, Y and Z directions respectively will be transferred to checkSTRESS if available. These values should be defined in “mm” for SI units and in “Inch” for English units.

If TAM is not available in PCF file, then user can also add / modify the TAM values through Edit Layout option. i.e., Click Edit Layout then select “Anchor” and select “Edit data” through Layout > Edit. From the dialog box shown, click on “Specified Displacement” and enter the TAM values.

## **User defined Equipment Nozzle Allowable Loads**

Equipment Nozzle Allowable Loads (forces and moments) provided by the equipment manufacturer or calculated using Applicable codes / Finite Element Methods entered at attribute “ATTRIBUTE2” under “END-CONNECTION-EQUIPMENT” of PCF file in the format FX, FY, FZ, MX, MY and MZ will be transferred to checkSTRESS. These values should be separated using a BLANK space. Please note, the force values should be entered in “lb” for English units and in “N” for SI units. Similarly, the moment values should be entered in “ft-lb” for English units and in “Nm” for SI units.

If the Equipment Nozzle Allowable Loads not available in the PCF then user can add these values through Edit Layout > Misc > User Allowables.

The allowables thus defined/transferred are compared against calculated loads and shown / printed in Support Load Summary outputs (can be viewed / printed through “Show Summary” option). If the calculated loads exceed the allowables, they are highlighted in red.

## PCF to checkSTRESS component Mapping

The types of components available in PCF are simulated as tabulated below in checkSTRESS.

<b>Component identifier in PCF</b>	<b>Component in checkSTRESS</b>
PIPE	Pipe
GASKET	Pipe
UNION	Pipe
CONNECTOR	Rigid Element
CAP	Rigid Element
FILTER	Rigid Element
INSTRUMENT	Rigid Element
INSTRUMENT-ANGLE	Rigid Element
MISC-COMPONENT	Rigid Element
MISC-COMPONENT-ANGLE	Rigid Element
MISC-HYGENIC	Rigid Element
SAFETY-DISC	Rigid Element
TRAP	Rigid Element
TRAP-ANGLE	Rigid Element
VALVE-ANGLE	Rigid Element
REDUCER-CONCENTRIC	Reducer
COUPLING	Reducer
REDUCER-ECCENTRIC	Reducer
FILTER-OFFSET	Reducer
INSTRUMENT-OFFSET	Reducer
MISC-COMPONENT-OFFSET	Reducer
TRAP-OFFSET	Reducer
CROSS	Four Rigid Elements or Four Pipes with Concentrated Mass

<b>Component identifier in PCF</b>	<b>Component in checkSTRESS</b>
VALVE-3WAY	Three Rigid Elements or Three Pipes with Concentrated Mass
INSTRUMENT-3WAY	Three Rigid Elements or Three Pipes with Concentrated Mass
VALVE-4WAY	Four Rigid Elements or Four Pipes with Concentrated Mass
INSTRUMENT-4WAY	Four Rigid Elements or Four Pipes with Concentrated Mass
SUPPORT	HANGER (by default)
FLANGE	Flange
LAPJOINT-RING	Flange
LAPJOINT-STUBEND	Flange
TEE	Pipe(s) with Branch SIF (Welding TEE) or (Weldolet)
ELBO-TEED	Pipe(s) with Branch SIF (Welding TEE) or (Weldolet)
INSTRUMENT-TEE	Pipe(s) with Branch SIF (Welding TEE) or (Weldolet)
REDUCER-CONCENTRIC-TEED	Pipe(s) with Branch SIF (Welding TEE) or (Weldolet)
Y-PIECE-FITTING	Pipe(s) with Branch SIF (Welding TEE) or (Weldolet)
ELBOW	Bend
FILTER-ANGLE	Bend